

Portfolio, program and project management

Integrated portfolio, project and product lifecycle management for an optimized product portfolio and faster time-to-market

Benefits

- Optimize your product portfolio
- Link program and project execution with product portfolio decisions
- Meet time-to-market requirements with capacity planning and resource management
- Make quick and informed decisions by using analytics and dashboards
- Integrate with product lifecycle management

Features

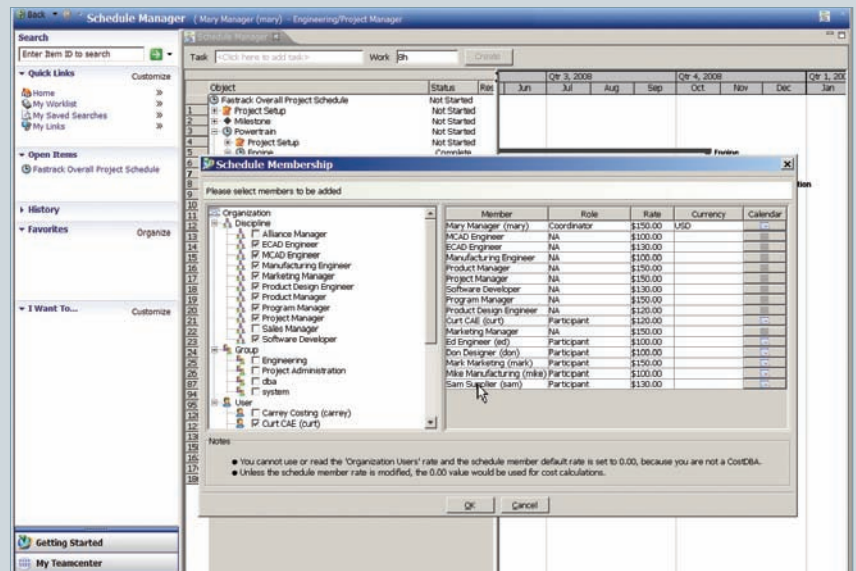
- Top-down portfolio planning linked to bottom-up program execution
- Holistic view into products, product lines, platforms and brands
- Investment analysis, what-if scenarios and Efficient Frontier
- Model options for balancing capacity against the product roadmap

Summary

Teamcenter® software allows companies to connect their strategic portfolio plans to program and project management and to detailed operational execution, thereby maximizing new product development performance and improving time-to-market. Teamcenter provides users with quick and easy access to dashboards and analytics that empower them to make informed business decisions. Integration with existing product lifecycle management (PLM) information allows users to have continuous visibility to the portfolio plan, program execution and requirements throughout a product's lifecycle.

Make the best use of your scarce resources

Teamcenter brings portfolio management, project management and the product lifecycle together to enable your company to fully leverage its resources and prioritize your products so they can be aligned to drive your strategic business objectives forward. You can leverage the Teamcenter portfolio, program and project management capabilities to strike the right balance between new products and existing products, thereby ensuring that you have the right resources to deliver your product plans.



TEAMCENTER

www.siemens.com/teamcenter

SIEMENS

Portfolio, program and project management

Features *continued*

- Ability to budget and forecast costs and revenue across product lines, products, projects and strategies
- Out-of-the-box product-specific analytics with drill-down capability in stakeholders' preferred format
- Collaborative environment for distributed teams
- Dynamic linking of product portfolio-driven project timelines to execution signoffs and workflows
- Ability to drive and trace project tasks by PLM workflows or change process events

product initiatives against the revenue goals and innovation strategies of your organization. As shown in the accompanying screen, Teamcenter gives you a holistic view into products, product lines, platforms and brands, enabling you to create a roadmap that optimizes your product portfolio so that it can drive revenue.

Only Teamcenter provides a complete product portfolio management solution, allowing you to view all of your financial and resource constraints and balance them against your corporate objectives.

Teamcenter enables you to prioritize your product investments through what-if scenario analysis and Efficient Frontier. Its results facilitate more informed investment decisions that assist you in meeting your overall business objectives.

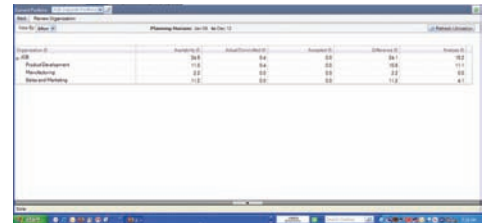
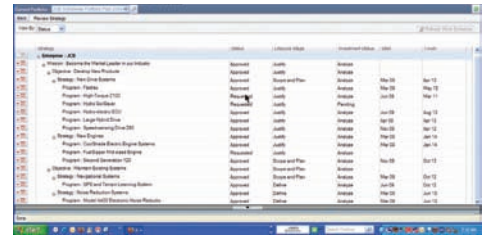
Program and project execution

Today's product planning processes are often out of date with respect to information about projects in the pipeline. This is due to inconsistent and inefficient global new product introduction (NPI) processes and the lack of a single source of product, program and project knowledge.

Teamcenter lets you link your portfolio decisions to programs and projects, which can then be linked to detailed development, engineering, simulation and manufacturing activities.

The Teamcenter collaborative framework and common data model allows you to manage all of the design data created by these engineering domains while allowing development groups and suppliers alike to share and exchange this data. Just as importantly, Teamcenter supports all of the tools and processes you leverage to develop these complex products across a complete product lifecycle.

With Teamcenter, you can integrate top-down product portfolio planning – such as ideation, strategic planning, investment analysis and capacity planning – with



bottom-up program execution, such as resource management, project management, financial management and change management.

Program planning and control can be orchestrated by leveraging the Teamcenter PLM integration capabilities. Having a single source of projects makes global program execution possible. Project schedules are linked to requirements and project tasks can be driven by PLM workflows or change process events. Users can also verify that costs are on track for delivery.

Capacity planning and resource management

Today's companies are under continuous pressure to deliver product faster. While time-to-market depends upon many factors, one of the most critical is having the right resources. The ability to perform portfolio-based capacity planning and resource management is absolutely crucial to NPDI success.

Before making commitments and beginning the work, you can use Teamcenter to create what-if scenarios that consider schedule changes and supplemental resources for balancing capacity against the product roadmap. This allows you to validate the roadmap against actual organizational capacity.



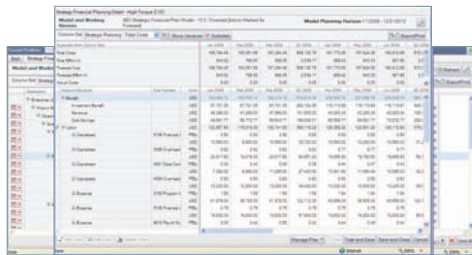
Optimize your product portfolio

Product planning complexity has outgrown spread sheets. Your company now deals with many competing ideas and demands for new products, as well as for enhancement and extension to existing products. Each project is analyzed independently. Today's companies often lack centralized information to compare projects and make decisions on what products to sunset, invest or maintain.

Teamcenter provides the capability to use best-in-class strategic planning to map

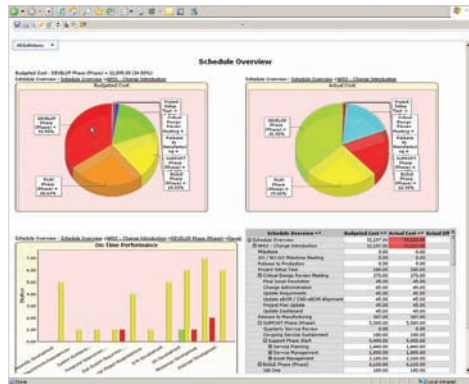
Teamcenter provides comprehensive financial planning from budgeting to total cost of development, which supports cost and revenue-related budgeting and forecasting across product lines, products, projects and strategies while producing a single source of organizational financials.

With Teamcenter, you can align top-down planning – using full-time equivalents (FTEs) and organizational units – with bottom-up named resource planning for integrated staff planning. This enables teams to better coordinate resources to drive product and program performance, improve the predictability of execution and more consistently meet target launch dates.



Management dashboards

The ability to make quick decisions in a rapidly changing global market is vital to your success. Teamcenter provides management dashboards (shown in the accompanying screen) that present complex analysis in simple graphical charts. You can leverage these dashboards to compare each project on cost/revenue, against a company strategy/market position, or against performance/project status. Teamcenter enables you to perform



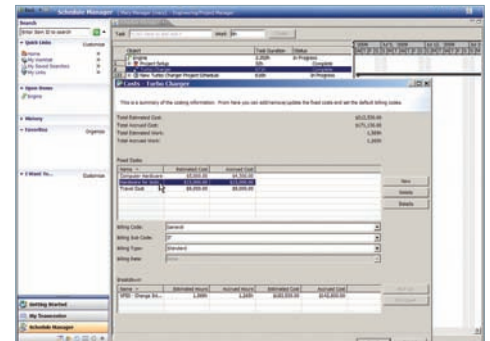
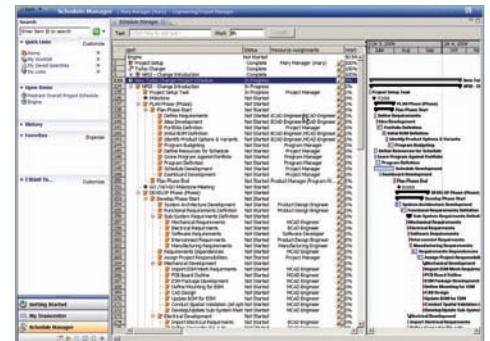
what-if scenarios to determine the best response to changing market conditions and competitive pressures. You do this by using drill-down analytics delivered in your preferred format, such as Excel, SharePoint and Outlook.

PLM integration

Teamcenter-driven PLM integration enables you to have continuous visibility of the capacity plan and its requirements throughout a product’s lifecycle. It also allows you to leverage product knowledge during product portfolio planning.

Only Teamcenter provides market-leading portfolio management and PLM capabilities as a single, integrated solution that can be deployed across your project, finance and operations on an enterprise basis. Strategic planning is linked to operational execution and key PLM processes, including customer needs management, requirements management, workflow and change management, collaboration, document management, records management and work breakdown structures.

The Teamcenter continuous visibility gives you better control of project costs, resources and timelines. PLM integration allows you to leverage existing PLM knowledge, such as product designs, bill of materials (BOMs) and requirements, facilitating early and quick feasibility studies of new product ideas and informed decisions about cost, feasibility, performance, resources and risks. PLM integration also enables you to re-use existing products, trace requirement across multiple programs and transfer project information into systems engineering and product development processes without manual intervention.



Contact
 Siemens Industry Software
 Americas +1 800 498 5351
 Europe +44 (0) 1276 702000
 Asia-Pacific +852 2230 3333

www.siemens.com/teamcenter

© 2011 Siemens Product Lifecycle Management Software Inc. All rights reserved. Siemens and the Siemens logo are registered trademarks of Siemens AG. D-Cubed, Femap, Geolus, GO PLM, I-deas, Insight, JT, NX, Parasolid, Solid Edge, Teamcenter, Tecnomatix and Velocity Series are trademarks or registered trademarks of Siemens Product Lifecycle Management Software Inc. or its subsidiaries in the United States and in other countries. All other logos, trademarks, registered trademarks or service marks used herein are the property of their respective holders. X10 9681 8/11 C